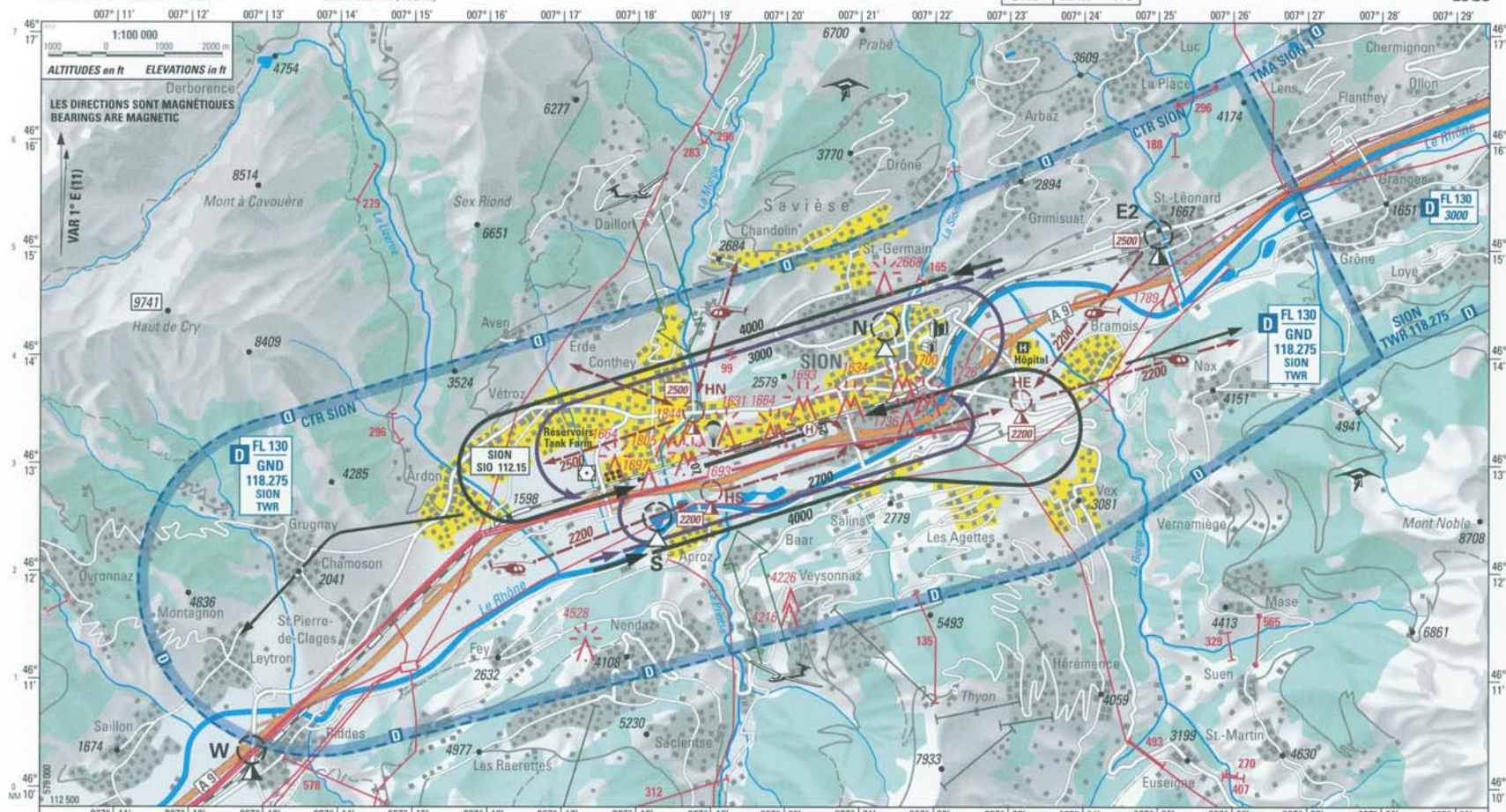


CARTE D'APPROCHE A VUE
VISUAL APPROACH CHART

ELEV 1581 ft (482 m)

TWR 118.275 HO
GND 121.7 HO

SION
LSGS



W N E2 S MNM 3000	HEL-Routen Routes-HEL	Zones sensibles au bruit Noise sensitive areas	<p>When ready for departure transmit outbound route: Lorsque prêt pour le départ transmettez votre route prévue: (e.g. ready for departure ECHO-LEUK)</p>
Circuits AD: AD Circuits:	HEL REP E2: 46° 15' 08" N / 007° 25' 04" E HN: 46° 13' 30" N / 007° 18' 47" E HE: 46° 13' 35" N / 007° 23' 12" E HS: 46° 12' 40" N / 007° 19' 01" E	Secteurs d'APCH GLD GLD APCH sectors Contact radio obligatoire 5 min avant pénétration CTR/TMA (GLD) RDO contact compulsory 5 min prior entering CTR/TMA (GLD)	TMA MILTEMPO: ACT → NOTAM and DABS Altitudes en ft; Hauteurs en ft Altitudes in ft; Heights in ft
ACFT bimoteurs: Multi engine ACFT: RWY 07: 4000 RWY 25: 4000	FATO au sud de la piste uniquement pour HEL basés FATO south of RWY for based HEL only	Transit: MNM 6000 CTN: PJE MAX 15000	

Information contained on this page are not official and shall not be used for navigation purpose.
For flight preparation use only the official documentation published in the Swiss AIP.

© 2011 Swissstop, CH-3084 Wabern